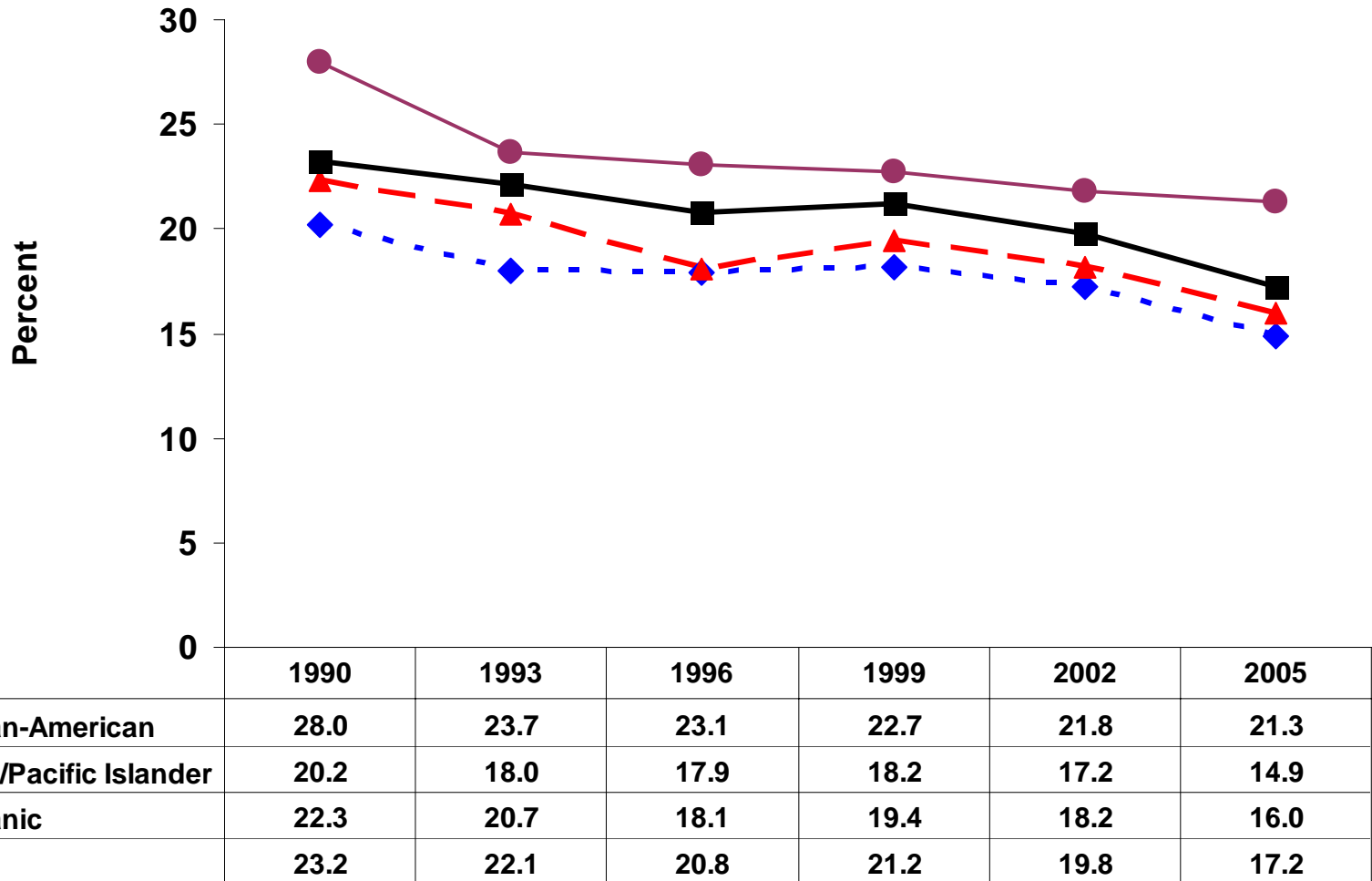




Smoking Prevalence Among California Adult Males by Race/Ethnicity, 1990-2005

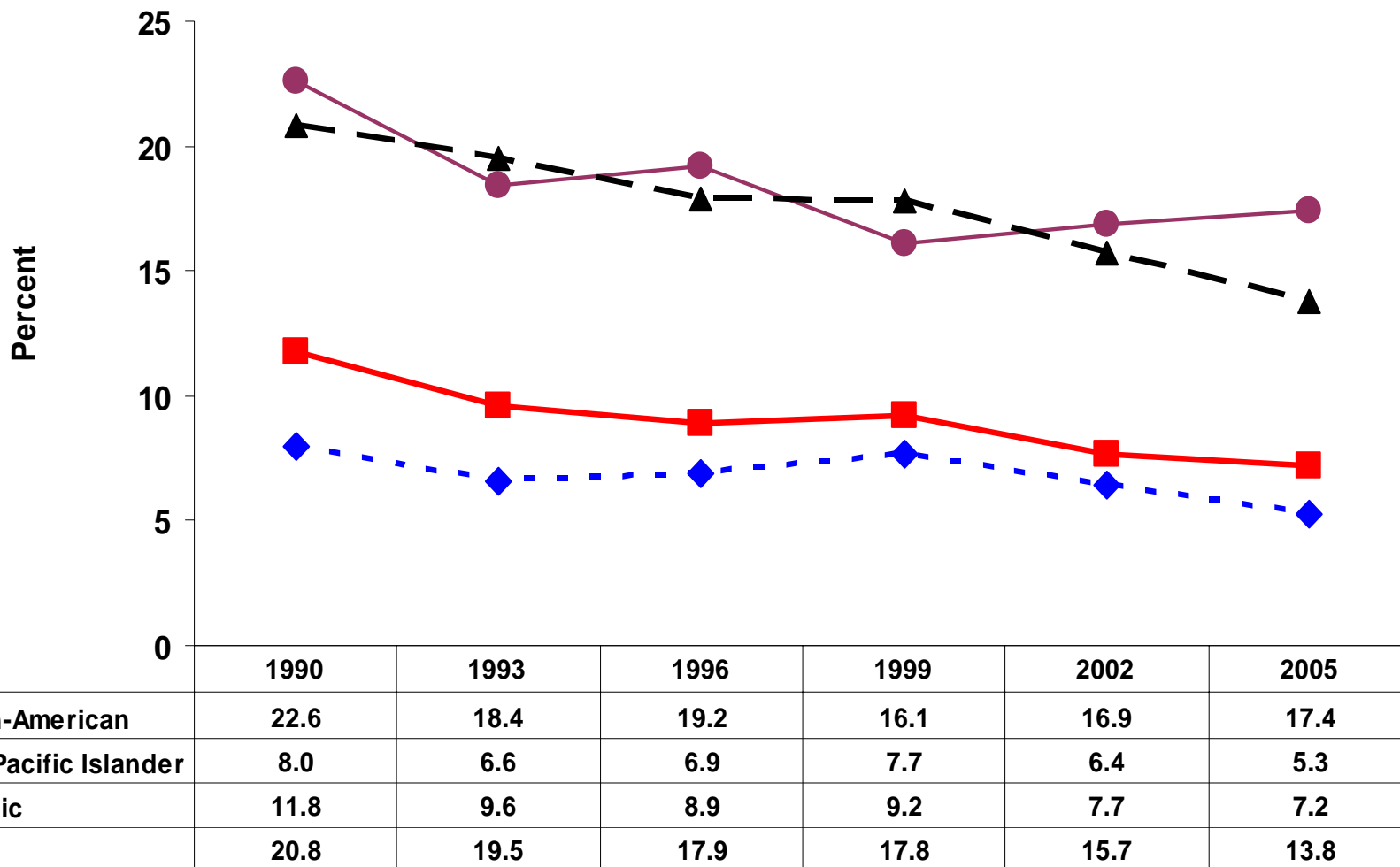


Source: California Tobacco Survey, 1990-2005, age-adjusted 2000 Census.

Prepared by: California Department of Health Services, Tobacco Control Section, 2006.



Smoking Prevalence Among California Adult Females by Race/Ethnicity, 1990-2005

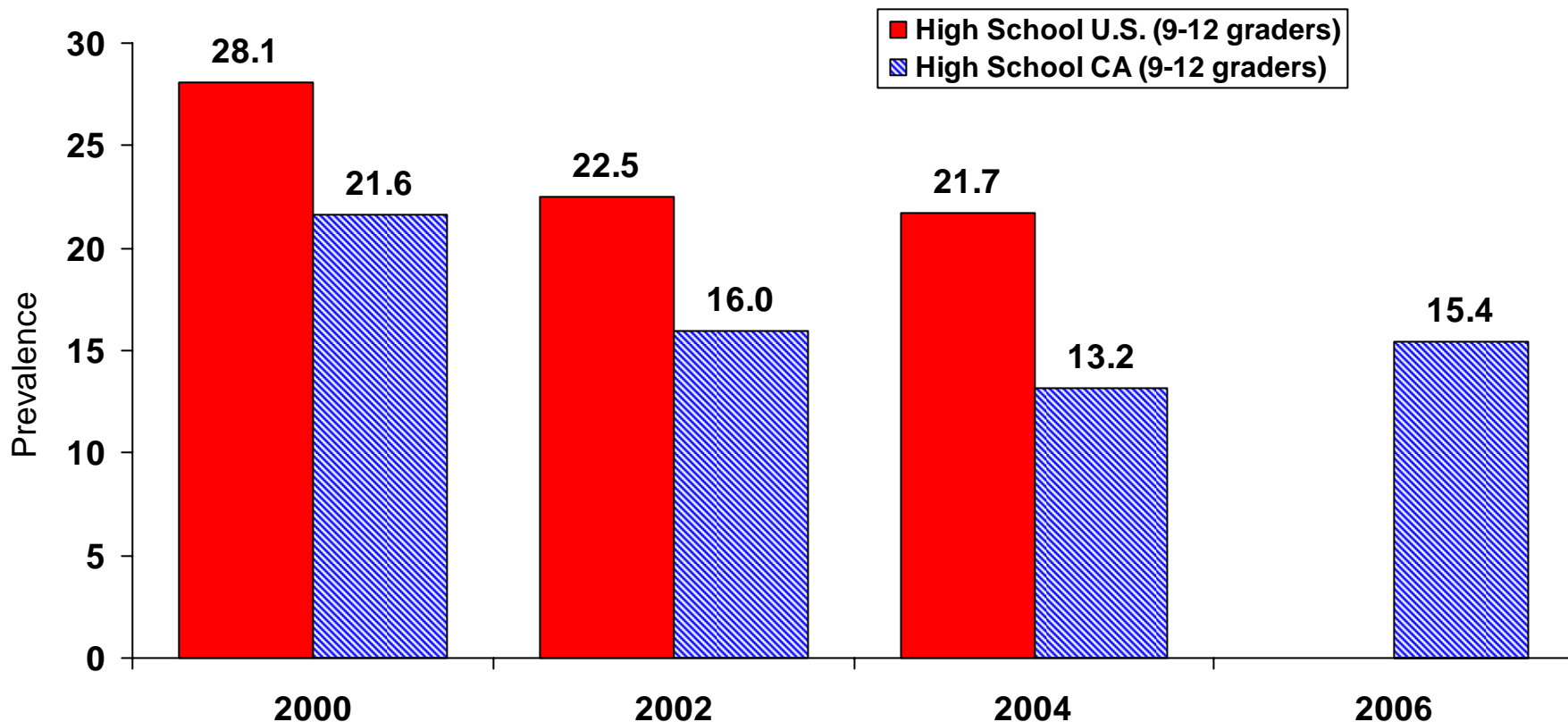


Source: California Tobacco Survey, 1990-2005, age-adjusted 2000 Census.

Prepared by: California Department of Health Services, Tobacco Control Section, 2006.



30-day Smoking Prevalence for California and U.S. High School (9th-12th grade) Students, 2000-2006

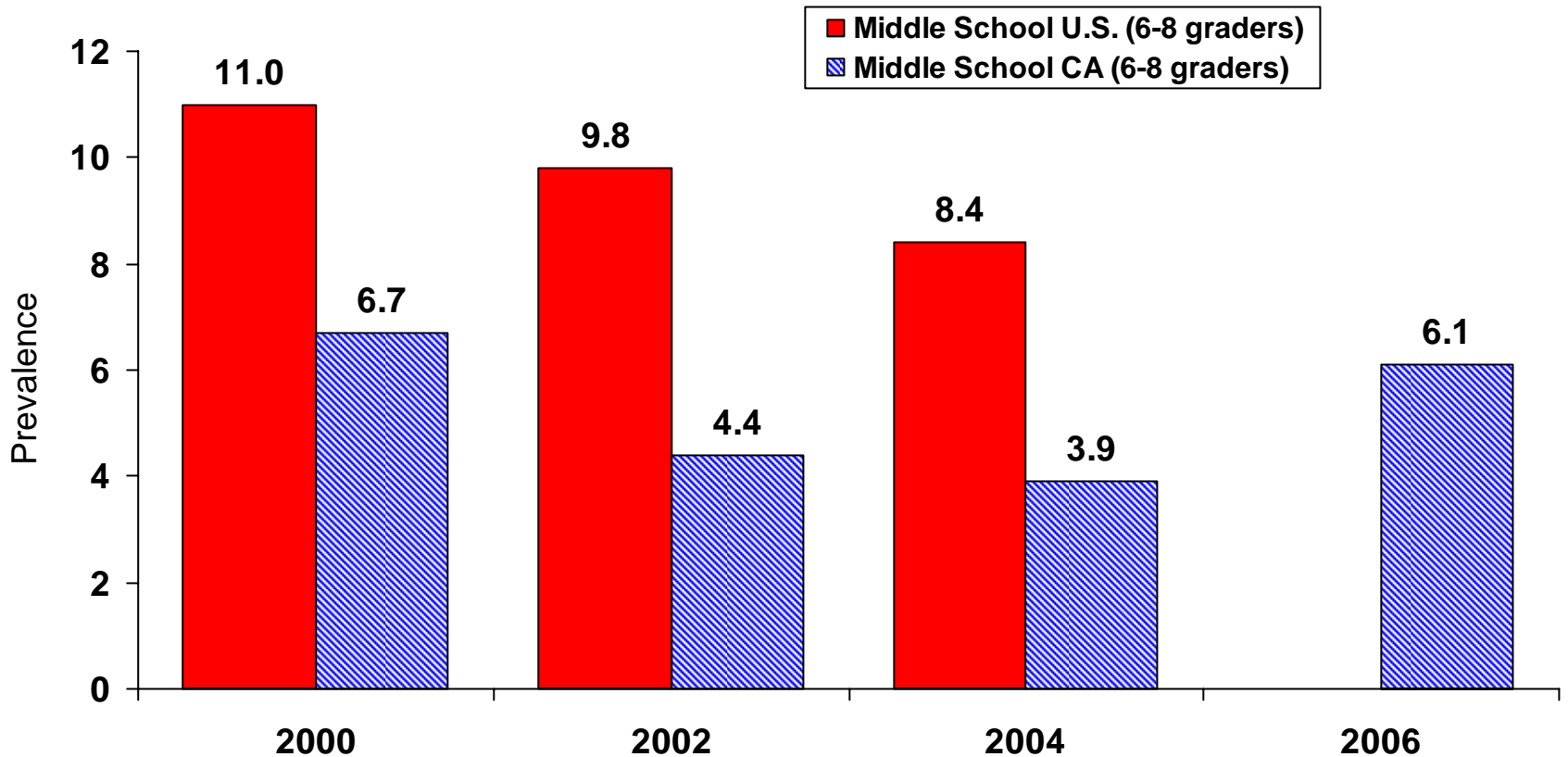


Source: The 2000 California data is from the National Youth Tobacco Survey (NYTS) collected by the American Legacy Foundation, which used passive parental consent. The 2002, 2004, and 2006 data is from the California Student Tobacco Survey. The 2002 and 2004 data collection used active parental consent while the 2006 used a mixed parental consent procedure. The U.S. data is from the NYTS collected by the American Legacy Foundation and the Centers for Disease Control and Prevention. Note that the 2006 U.S. data is currently unavailable.

Prepared by: California Department of Health Services, Tobacco Control Section, July 2006



30-day Smoking Prevalence for California and U.S. Middle School (6th-8th grade) Students, 2000-2006

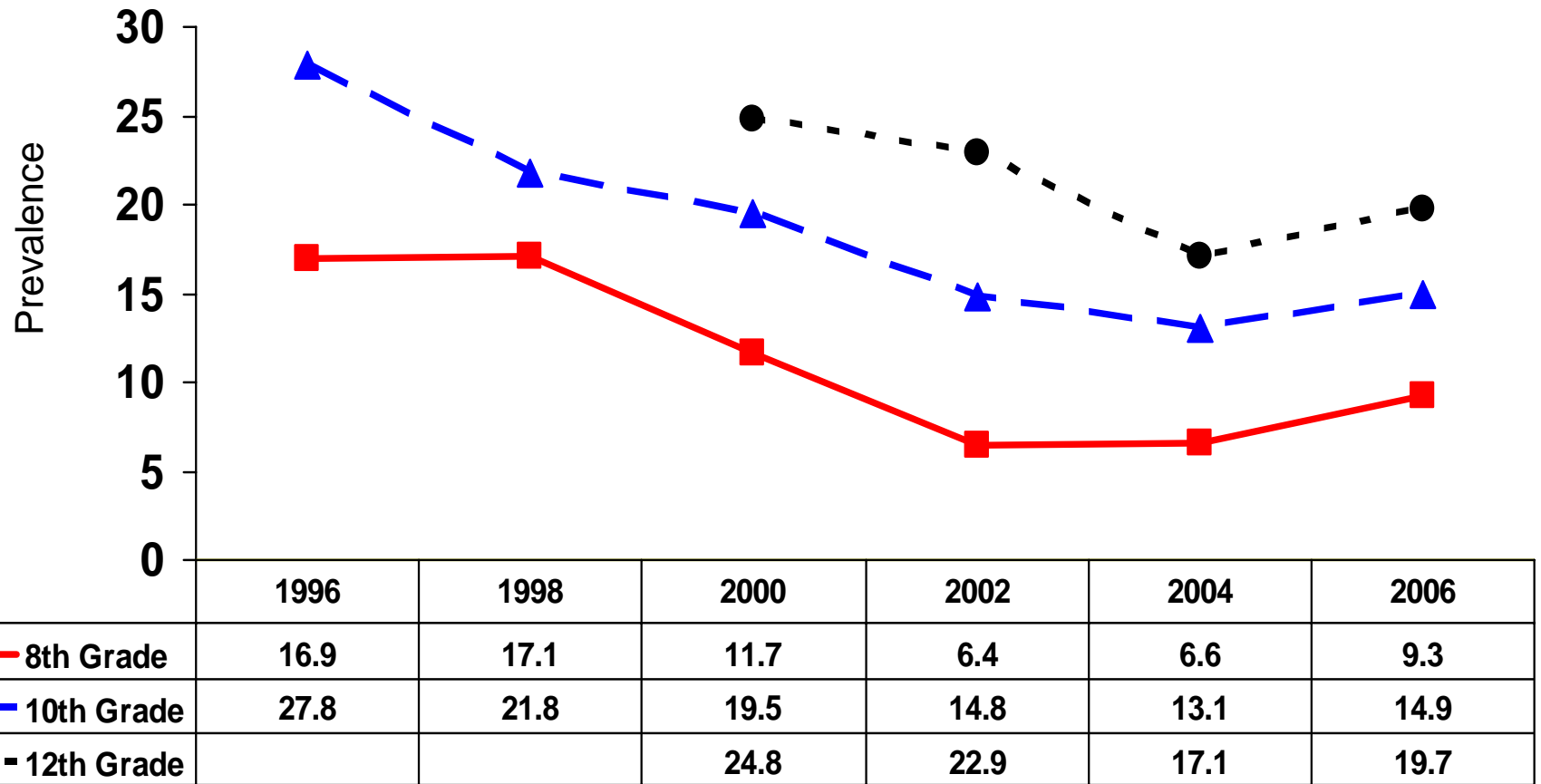


Source: The 2000 California data is from the National Youth Tobacco Survey (NYTS) collected by the American Legacy Foundation, which used passive parental consent. The 2002, 2004, and 2006 data is from the California Student Tobacco Survey. The 2002 and 2004 data collection used active parental consent while the 2006 used a mixed parental consent procedure. The U.S. data is from the NYTS collected by the American Legacy Foundation and the Centers for Disease Control and Prevention. Note that the 2006 U.S. data is currently unavailable.

Prepared by: California Department of Health Services, Tobacco Control Section, July 2006



30-day Smoking Prevalence Among 8th, 10th, and 12th Graders in California, 1996-2006

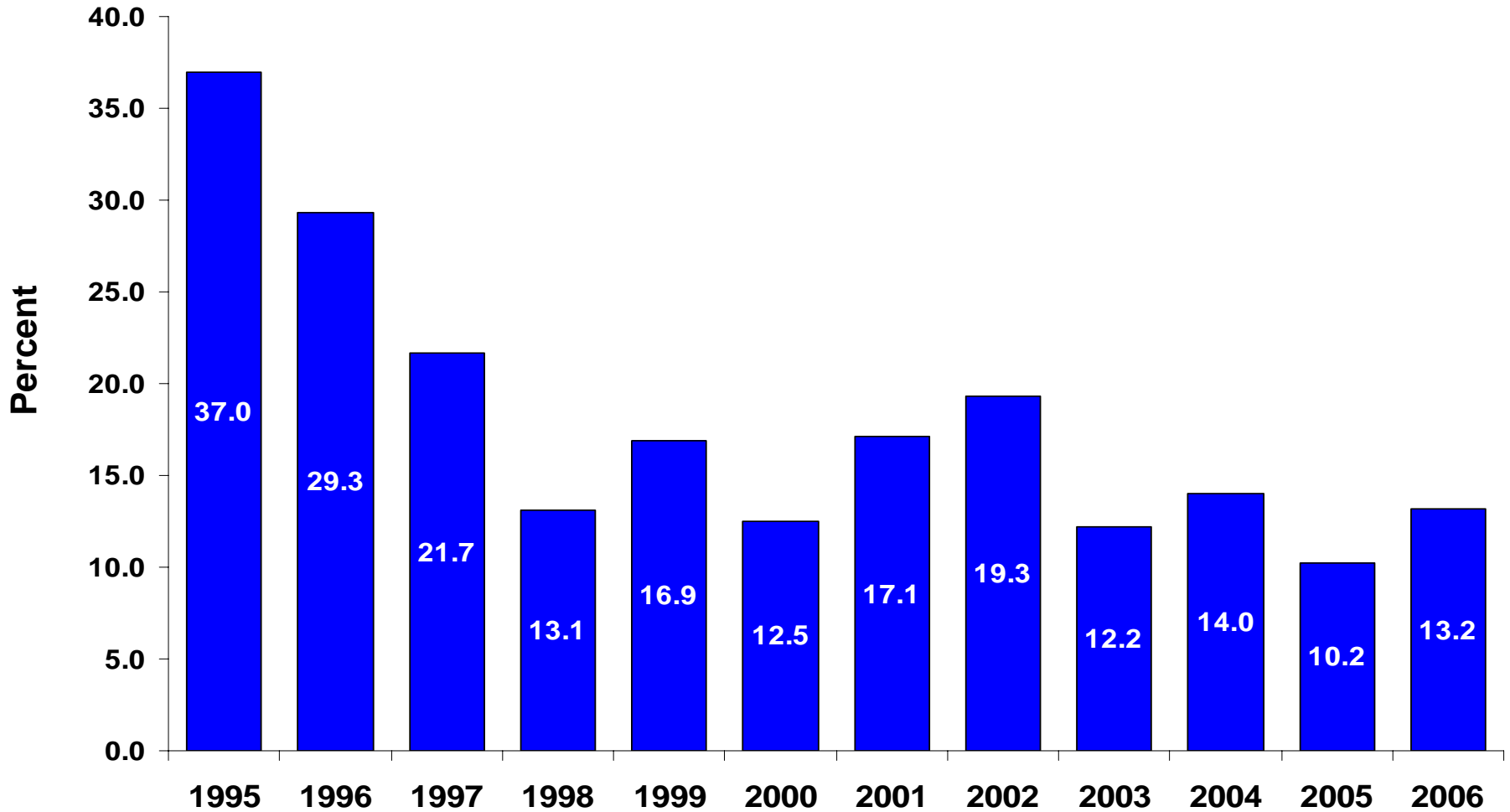


Source: The 2000 data is from the National Youth Tobacco Survey collected by the American Legacy Foundation, which used passive parental consent. The 2002, 2004, and 2006 data is from the California Student Tobacco Survey. The 2002 and 2004 data collection used active parental consent while the 2006 used a mixed parental consent procedure.

Prepared by: California Department of Health Services, Tobacco Control Section, July 2006



Percent of Retailers Selling Tobacco to Youth, 1995-2006



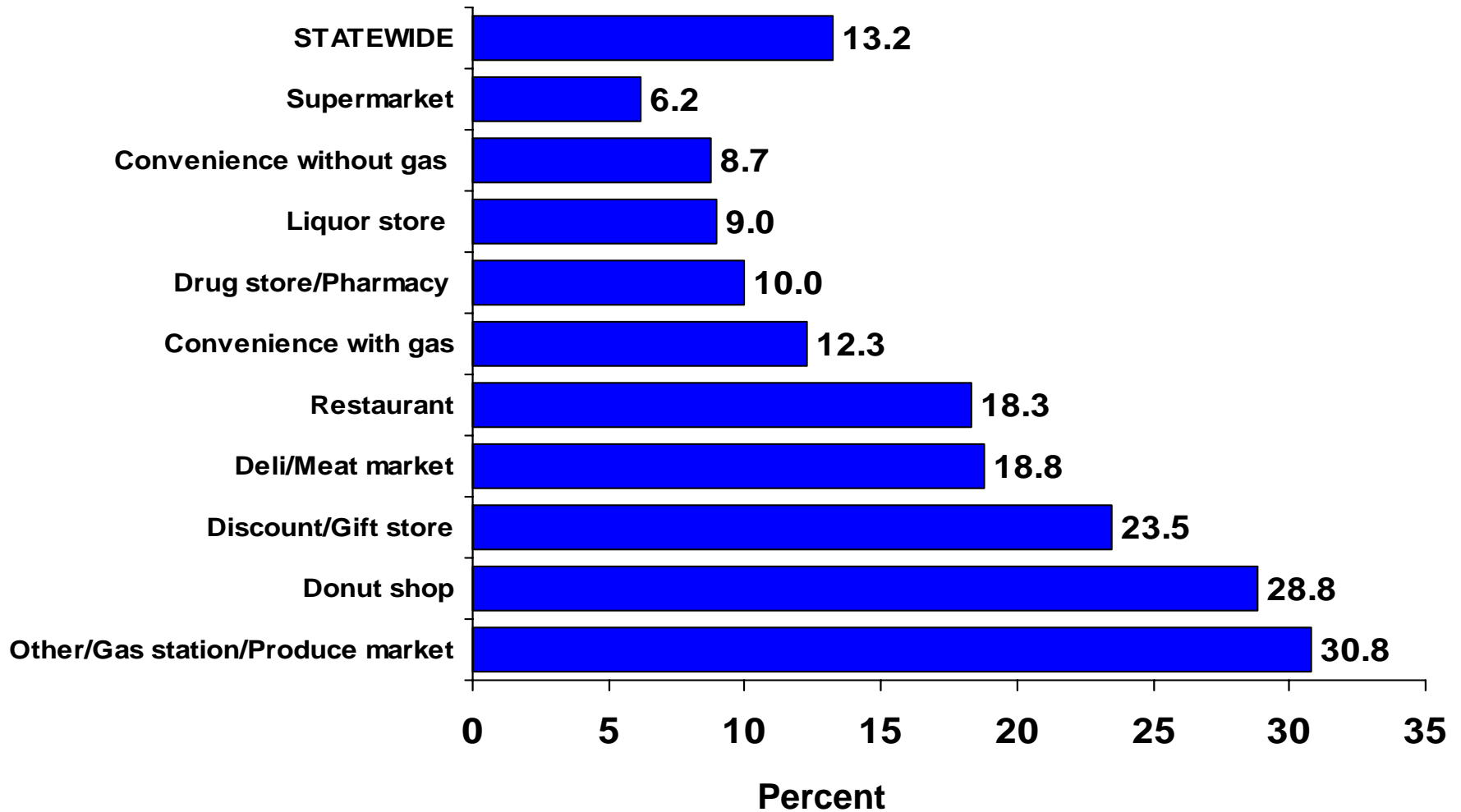
Attempted buy protocol 1995-1996; Actual buy protocol 1997-2006.

Source: Youth Tobacco Purchase Survey, 1995-2006.

Prepared by: California Department of Health Services, Tobacco Control Section, July 2006.



Percent of Retailers Selling Tobacco to Youth by Store Type, 2006



Source: Youth Tobacco Purchase Survey, 2006.

Prepared by: California Department of Health Services, Tobacco Control Section, July 2006.