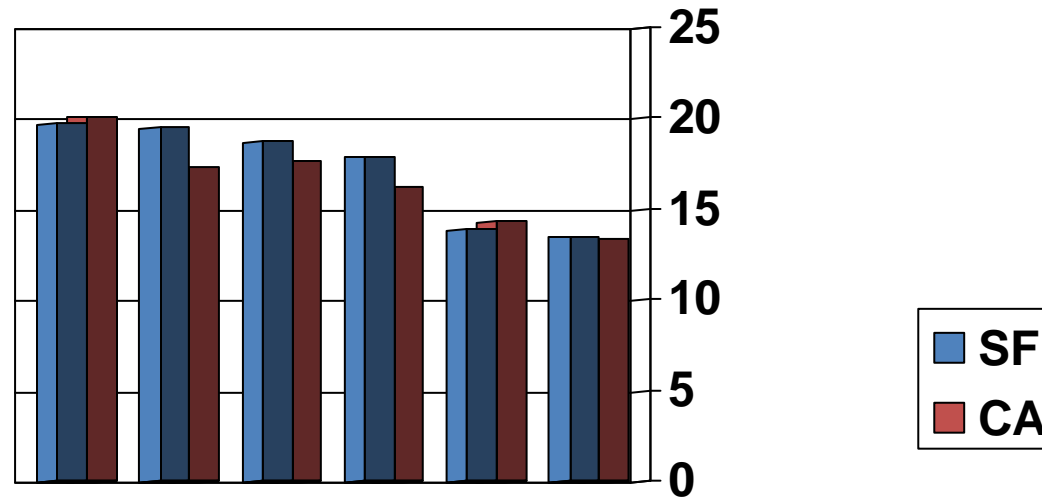


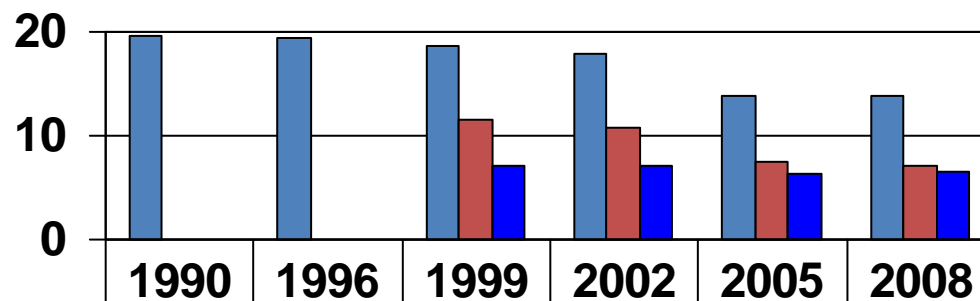
# SMOKING PREVALENCE OF SF AND CALIF ADULTS



	1990	1996	1999	2002	2005	2008
<b>SF</b>	19.7	19.5	18.7	17.9	13.9	13.5
<b>CA</b>	20.1	17.3	17.6	16.2	14.3	13.3

**DATA SOURCE: 2005, 2008 CALIFORNIA TOBACCO SURVEYS**

## SF ADULT SMOKING PREVALENCE 1990-2008

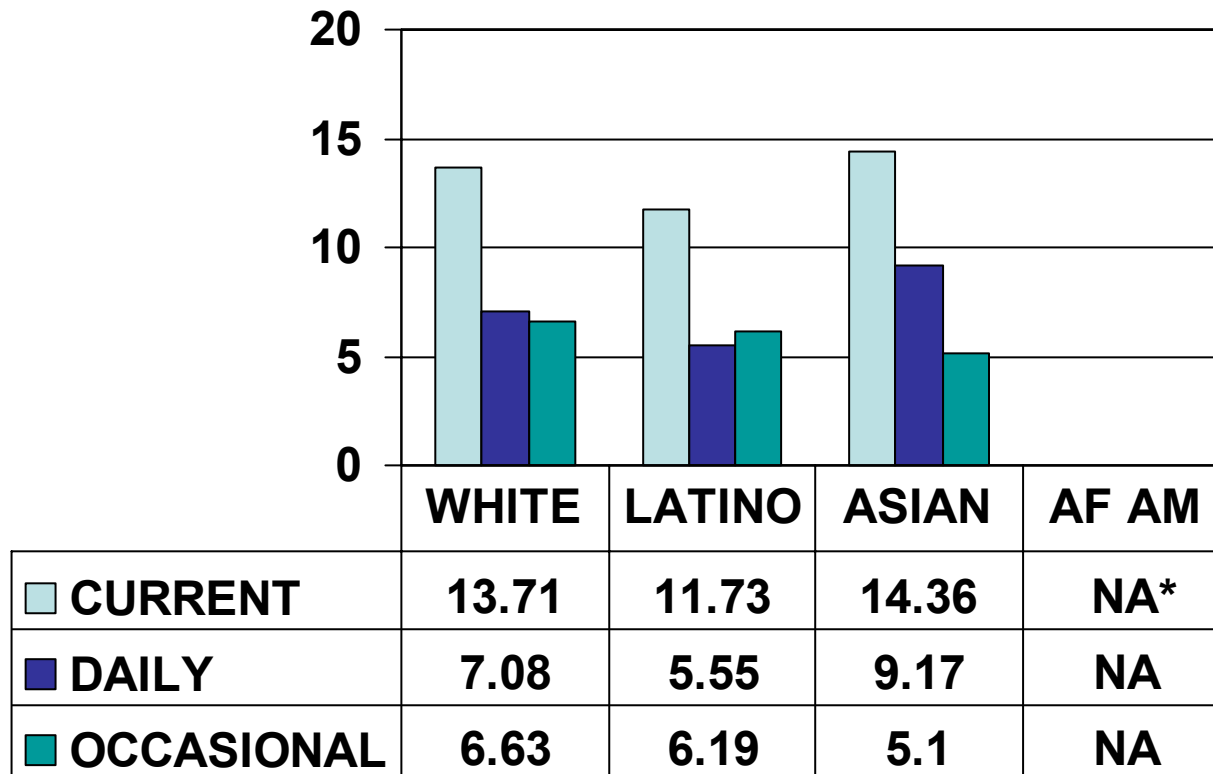


■ cur smoker	19.7	19.5	18.7	17.9	13.9	13.9
■ daily			11.5	10.7	7.5	7.2
■ occasional			7.2	7.2	6.4	6.6

■ cur smoker ■ daily ■ occasional

DATA SOURCE: 2008 CALIFORNIA TOBACCO SURVEY

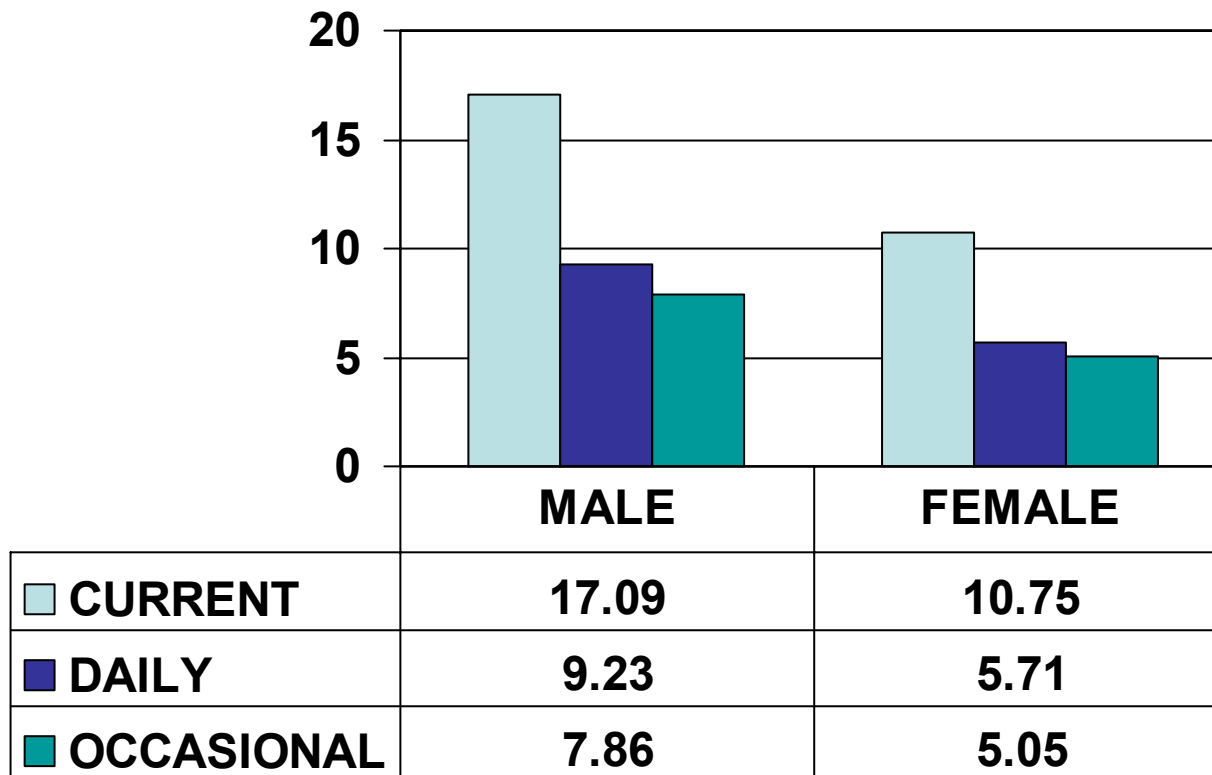
# 2005 SF ADULT SMOKING PREVALENCE BY ETHNICITY



**DATA SOURCE: 2005 CALIFORNIA TOBACCO SURVEY**

\* AFRICAN AMERICAN PREVALENCE NOT AVAILABLE DUE TO SMALL SAMPLE SIZE

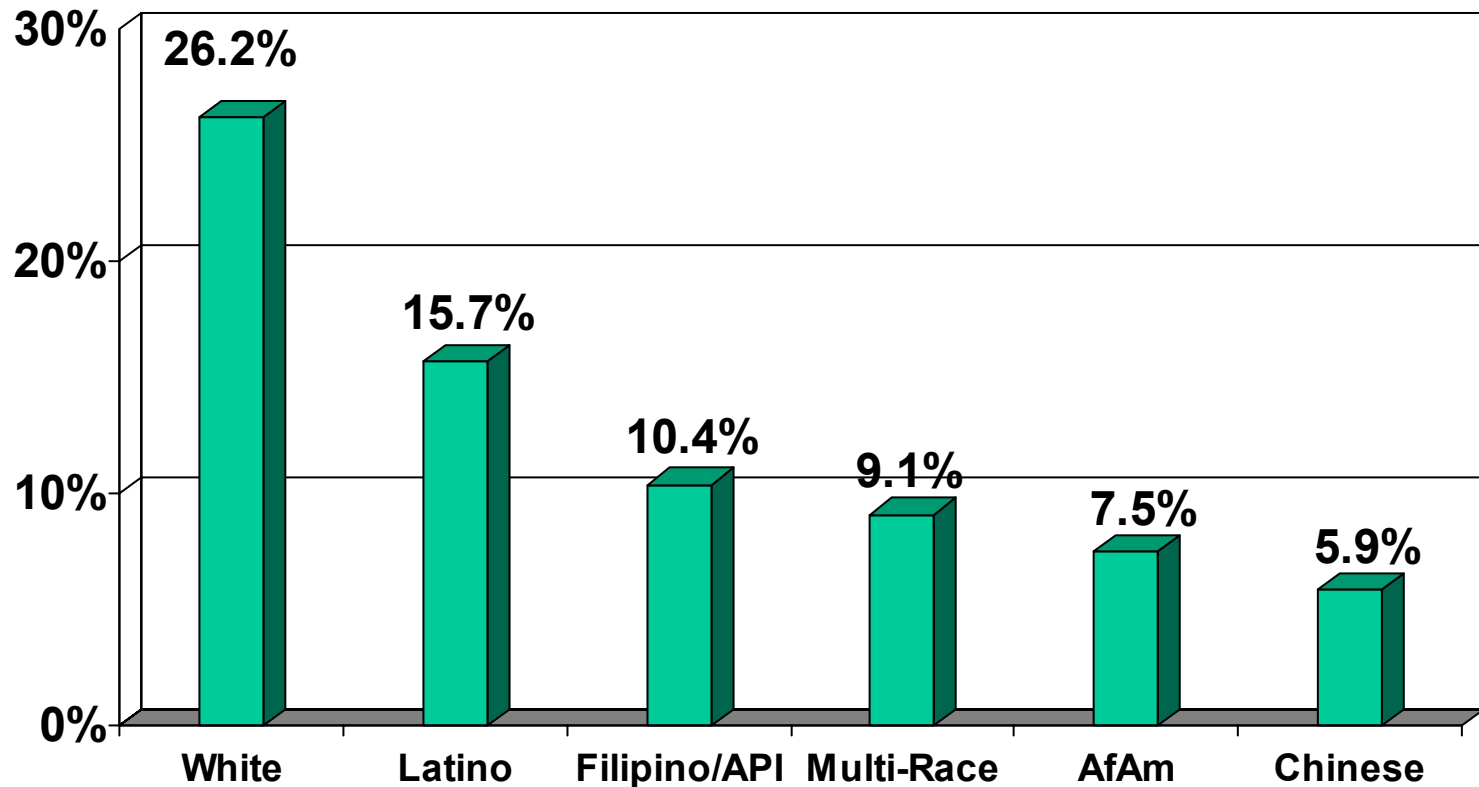
# 2005 SF ADULT SMOKING PREVALENCE BY GENDER



DATA SOURCE: 2005 CALIFORNIA TOBACCO SURVEY

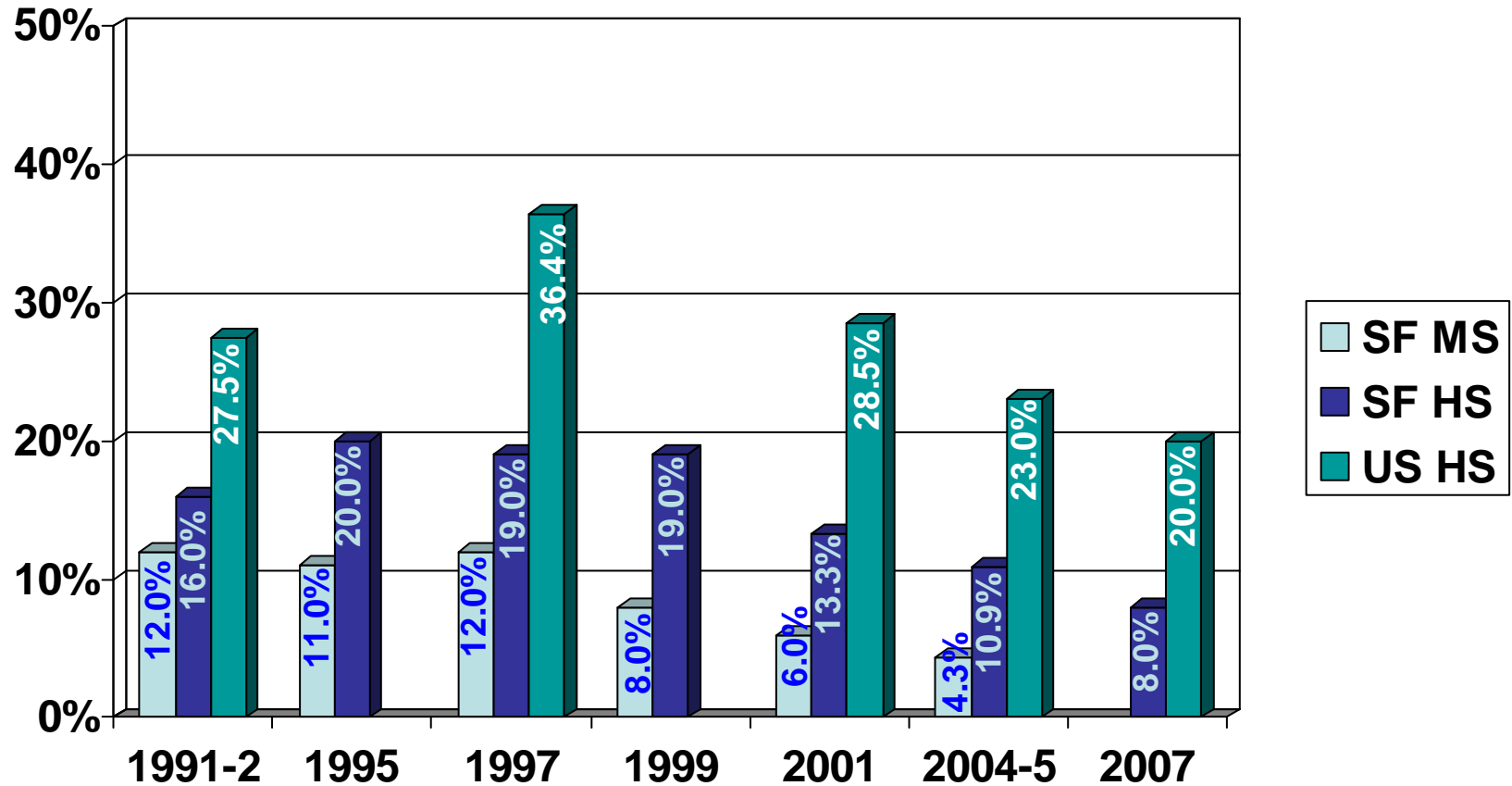
# Smoking Among SF High School Students

By Ethnicity - 2004



Source: 1999, 2001 and 2004 Youth Behavioral Risk Survey

# Youth Cigarette Smoking Prevalence (Smoking Within Past 30 Days)



Source: 1999, 2001, 2004 and 2007 Youth Risk Behavioral Surveillance Surveys